



# FIRST PRESBYTERIAN CHURCH WINTER HAVEN

## Tower Chimes

*Week of November 17, 2019*

*Issue 734*

*133 Years of Ministry*

Dr. Steven R. Negley  
Senior Pastor

Dr. C. Alan Harvey  
Associate Pastor

Rev. Sarah A. Bishop  
Associate Pastor for  
Christian Education and  
Family Ministries

Lynn M. McCoy  
Director of  
Music Ministries

Emily G. Snyder  
Director of  
Student Ministries

Robin D. Miller  
Director of Finance &  
Administration

Connie J. Shipley  
Administrative Assistant

Rose S. Flynn  
Office Assistant

Sammy D. Bryant  
Director of Maintenance

Tonia L. Milbry  
Custodian

### **“PINT-SIZE” FUNTIMERS NOVEMBER 15 AT 6:30 PM ADVENT CRAFTING WORKSHOP**



Time to get your crafting on! We will have a great night of crafts, music, and fellowship, as we prepare for the Advent/Christmas season. Wanna make a personalized gift for a family member? Or needing a family Advent wreath to center your families devotional time this Advent?

Join us, starting at **6:30 pm in McLeod Hall**; we'll have all the supplies, just bring your creativity! Dinner provided.

### **YOUTH HANDS AND FEET PROJECT**

**Saturday, November 16**, the youth group is Meeting at **10 am** to do some re-landscaping to the front of the youth house. Come enjoy some fellowship and earn service hours!



If you have any questions or would like to come volunteer, please let Emily know at 863-224-4403 or [snyder@firstpreswh.org](mailto:snyder@firstpreswh.org).

### **HEY EVERYONE! JOIN THE FUNTIMERS FOR CITRUS NIGHT!**

**Monday, November 18 at 6 pm** in McLeod Hall, Glenn Thomas will present a program on the history and future of citrus in Florida. Joyce Snively will cater a delicious dinner with a citrus focus. The cost is \$15 and is payable at the door.

To sign-up, contact the church at [office@firstpreswh.org](mailto:office@firstpreswh.org) or 294-3121.



# OPPORTUNITIES THIS WEEK

## Sunday, November 17 3 Cents-a-Meal

- 8:00 am Chapel Worship
- 9:15 am Connection (MH)
- 9:15 am Heart of Worship (Sanctuary)
- 9:30 am Sunday School-Children/Adults (CE)
- 10:30 am Sunday School-Youth (MH)
- 11:00 am Worship (Sanctuary)
- 5:30 pm High School Youth Group (GC)

## Monday, November 18

- 8:45 am MOM (CE)
- 5:00 pm Global Mission (MCR)
- 6:00 pm FunTimers (MH)

## Tuesday, November 19

- 9:00 am Staff Meeting (MCR)
- 9:30 am Joy Circle (Off-site)
- 12:00 pm Men's Lunch (MH)
- 12:00 pm Finance (UR)
- 6:00 pm Officer Training (MCR)
- 6:30 pm Deacons (MH)
- 7:00 pm Worship & Music (UR)

## Wednesday, November 20

- 8:45 am MOM (CE)
- 3:00 pm Christ Kids (CE)
- 5:30 pm Middle School Youth Group (GC)
- 6:00 pm Chancel Bells (MS)
- 7:00 pm Choir (MS)

## Thursday, November 21

- 12:00 pm Chapel Bells (MS)
- 3:00 pm Odd Month Third Thursday at 3 Book Discussion Club (MH)

## Friday, November 22

- 8:45 am MOM (CE)
- 5:00 pm Praise Band (Sanctuary)

## Saturday, November 23

- 10:00 am Youth Hands & Feet Program (GC)
- 2:00 pm Soup Kitchen Prep (Kitchen)
- 4:00 pm Soup Kitchen (737)

# Remember in Prayer

## MEMBERS

Marie Able	Frances Heath	Bev Morris
Melvin & Debbie Anderson	Kay Hedden	Nancy Neale
Kathy Andrews	Doris Hill	Bill Patchen
Helen Champlain	Bryan Howard	Barbara Roberts
Carl Cheatham	Bob & Isobel Hubbard	George Seagreaves
Charlie Darte	Jim Huff	Cash Sheaffer
Marjorie DiLorenzo	Martha Johnson	Joyce Shirah
Yolanda Dyer	Bill Johnston	Barbara H. Smith
Jana Easterling	John Kissel	Joel Smith
Dana Elmore	Dena Lancashire	Christine Stevens
Jim Francis	Eric Lindstrom	Pam Tallent-Blackburn
John Gray	Spike Lucia	Carolyn Thompson
Pam Gray	Pat McCarty	Mike Vibral
Jane Hayman	Bob McClew	Gwen Waters
Joyce Hayman	Edna Mitchell	Sug Zowarka

IN THE HOSPITAL: Helen Butz, Bill Everhart, and Jackie Pinkney

## Relatives & Friends

Michael Branch	Jeff Bowen's friend
Jeff Bronson	Rose Flynn's brother-in-law
Reese Burdette	Dana Cole's cousin
Debra Cain	Tom & Jeri Oldt's friend
Larry Durrence	George & Joyce Carefoot's brother-in-law
Al Ellis	Jim Threlkel's friend
Sidney Hilliard	Tillie Montney's mother
Joyce Hoffman	Wade Hoffman's mother
Verona Johnson	Lynn Oakley's friend
Pete Kent	Charley & Nancy Chilton's nephew
John Kluberg	Nancy Dobler's brother
Bob Lapsley	Susan Singleton's friend
Nathan Leaman	Lynn Oakley's friend
Charlotte Mayden	Gale Waters' cousin
Sal Moraco	Tom & Jeri Oldt's friend
Shelia Moskowiz	Nell Speer's friend
Michael Oriani	Joe Oriani's brother
Debbie Rogers	Lynn Oakley's friend
Sandy Schwenk	Zane Schwenk's mother
April Stade	Pam Gray's friend
Penni Tinsley	Tom & Jeri Oldt's friend
Margarita Villarreal	Lynn Oakley's friend
Ennis & Liz Young	Anne Meadows' friend

## 3 CENTS-A-MEAL THIS SUNDAY



We will collect the  
**3 Cents-a-Meal Hunger  
Offering** during worship  
services this **SUNDAY,  
NOVEMBER 17.**

This offering is divided between our  
Soup Kitchen/Bag Lunch Ministry,  
Beth-El Farm-workers Ministry,  
and Honduras.



## MILITARY

Zach Anaya	Sean Harp
Brenden Anderson	David Knowles
Christian Anderson	John Marotti
Samuel Crockett	Mathew Massam
Zach Drum	KaitLin Marotti-Pitts
Robert Ferguson	Ashton Pitts
Stephanie Gillie	Shad Skinner
Eddie Gray	Drew Stapor
Daniel Harp	

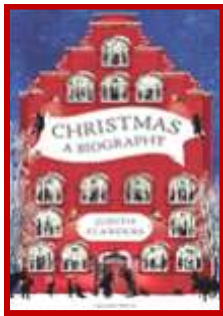
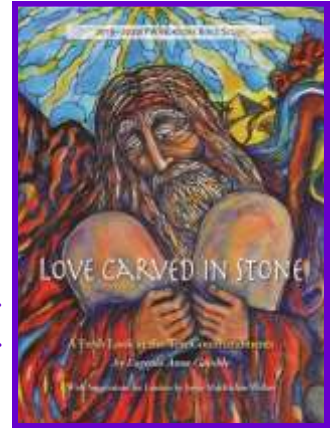
# PRESBYTERIAN WOMEN BIBLE STUDY

The Lydia and Joy circles current Bible Study is:  
“Love Carved in Stone” – *A Fresh Look at the Ten Commandments.*

*The Joy Circle* meets on the **3rd Tuesday** of each month and will meet on **November 19 at 9:30 am** at the home of Carol Carter.

*The Lydia Circle* meets on the **2nd Monday** of each month and will meet on **December 9 at 10 am** in the back of McLeod Hall.

The study books are available at a cost of \$10. See either Sue McClew or Carol Carter, or come by the church office to purchase your copy. Our group is open to any and all women of the church interested in fellowship and Bible study.



## ODD MONTH THIRD THURSDAY AT 3 BOOK CLUB

*Christmas A Biography*, By Judith Flanders.

Please join us **Thursday, November 21 at 3 pm** in the back of McLeod Hall for discussion and light snacks.



## MYSTERY FAITH THEATER 600 SATURDAY, NOVEMBER 23 AT 6 PM

Pass along the word to the Young Adult in your life, our first *Mystery Faith Theater 600* night will be **Saturday, November 23** at Rev. Sarah's home. Inspired by *Mystery Science Theater 3000*, we'll gather together for a meal, fellowship, and then grabbing the popcorn to crack jokes and enjoy a 'bad' movie. Rev. Sarah will have the main course, so bring a side dish to share. Be sure to connect with Emily Snyder 863-224-4403 or Rev. Sarah 574-298-2295 to get an address.



## PLEASE SIGN UP NOW!

“Come to the Stable” is only weeks away and we need shepherds, angels, and kings for the **6:30 pm children's performance** and the **7:30 pm middle/high schooler's performance** on Saturday evening, December 14.



Elementary school children can sign-up for the 6:30 performance on the board in the church Narthex OR at Christ Kids on Wednesdays.

Middle and High schoolers can sign-up for the 7:30 performance on the board in the church Narthex OR at the Youth Group meetings.

Questions? Call Nancy Shaw at 258-9232.



## DECEMBER SAVE THE DATES

**Deck the Halls:** December 1 at 12:00 pm

**Jingle Java Jam:** December 8 at 4:00 pm

**Christmas Eve Candlelight Service:** December 24 at 5:00 & 9:00 pm

## NEXT PRAYER SHAWL MEETING IS MONDAY, NOVEMBER 25

The prayer shawl group needs you! We meet the **4th Monday** of the month at **10:00 am** in McLeod Hall to knit/crochet together. We would love to have you come to our meetings. But... you don't need to be able to meet with us to participate.



You can knit or crochet at home. There is lots of yarn in the closet at the church. So please help us bring comfort to others with the lap robes and prayer shawls that we create. Any pattern you would like to use would be fine, but we usually keep things pretty simple.

We want to continue to be able to meet the need for the prayer shawls so your help will be greatly appreciated! Call the church office at 294-3121 if you have questions.



## WEEKLY YOUTH FELLOWSHIP MEETINGS

**Middle School Youth** is meeting on **Wednesday evenings, from 5:30 – 7:30 pm** in the Golden Student Center. Join with **Philip Batista, Bill Lockhart, Steve Negley, and Emily Snyder (our Director of Student Ministries)** and our sixth, seventh, and eighth grade students as we enjoy time of food (we always have a meal), fun, and faith. Feel free to invite your friends to come along, too.

**High School Youth** (our ninth, tenth, eleventh, and twelfth grade young people along with **Cheryce Harris, Steve Negley, Jonathan Owen, Emily Snyder, and Peggy Threlkel**) gathers at the Golden Student Center (711 Sixth Street, NW) on **Sunday evenings (5:30 – 7:30 pm)** to share food, Christian fellowship, and service. Come check us out and watch your walk with Jesus deepen.



## CHRIST KIDS!



Christ Kids – our faith-filled and safe after-school program for children 4 years through 5<sup>th</sup> grade meets **Wednesdays at 3 pm**. Permission slips for families are on the church website, so spread the word and don't forget to join us as an Adult Volunteer! Questions? Contact Rev. Sarah via calling the church office at 294-3121 or emailing [sbishop@firstpreswh.org](mailto:sbishop@firstpreswh.org).



## SOUND BOARD OPERATORS WANTED

If technology is your thing, we have a place for you in our musical praise!! We are in need of people who would like to learn about our sound system and help during the worship services to make sure all our praise is heard! We will be holding a training session, so **contact Lynn at 701-570-1485** and let her know if you are willing to join the Sunday rotation in the sound booth. **PLEASE!!**



## ANGELS CARE CENTER OF ELOISE Angel Collection Box Needs

There is an ongoing need for the following items to give out at the Angels Care Center. Please leave items in the Angel Collection Box in McLeod Hall. Thank YOU, and God Bless!!!

**First Aid Kits:** washcloths, band-aids, wet wipes, small soaps, small antibacterial soap, Q-tips, small packets of antibiotic ointment, etc.



**Children's "Jesus Kits":** coloring sheets with Biblical themes, crayons, scripture/song cards (simple and short for children), small books, stickers, etc.

**Toiletry Kits:** shampoo, soap, deodorant, razors, feminine products, combs, washcloths, hand gel, lotion, toothbrush and toothpaste, small samples from hotel/motels, etc.

**Miscellaneous:** zip lock bags (gallon, quart and snack size).

# JOIN US ON SUNDAYS!!!



## 8:00 am Chapel Worship

A traditional worship service held in our chapel. The service follows the same order as the 11:00 am worship, but does not have a Chancel Choir. Musical ensembles will offer special music on many Sundays. *A Time with Younger Disciples* will be included when we have children in attendance.

## 9:15 am Heart of Worship

A Praise and Worship service held in our sanctuary. Along with scripture, sermon, and prayers, a praise band will help the congregation in adoring and showing reverence to God. Following the *Time with Younger Disciples*, children will be invited to join Ms. Lynn in music and then to join in their own Children's Sunday School Classes.



## 11:00 am Sanctuary Worship

A traditional worship service held in our sanctuary. The service follows the same order as the 8:00 am Chapel Service, and includes music from the Chancel Choir and the organ, as well as other instruments and groups.

## DON'T MISS THE CONNECTION 9:15-10:45 AM

This fellowship time in McLeod Hall offers a coffee bar type selection with different flavored creamers, pastries, etc. It is a gathering place before or between worship and Sunday School for some folks.



## SUNDAY SCHOOL FOR ALL AGES CHILDREN & ADULTS: 9:30 - 10:30 AM

### FOR THE CHILDREN



SPARK Sunday School will begin for our children (PreK-5<sup>th</sup> grade) and will be sparking faith after the *Time With Younger Disciples* in the Heart of Worship service. PreK-K will be meeting in Room 101 and 1<sup>st</sup> through 5<sup>th</sup> grades in Room 206. Don't forget they will also be doing music with Ms. Lynn before their respective classes and ART on the third Sunday. Sunday School ends at 10:30 am.

Can't make it to church? Your family can activate faith with God's Word by connecting with the stories at home with our Spark home sheets and buying a copy of the Story Bible at [www.weareSparkhouse.org](http://www.weareSparkhouse.org).

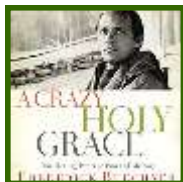
### ADULT SUNDAY SCHOOL

#### PERSPECTIVES SUNDAY SCHOOL MEETS IN THE GENEVA ROOM

The *Adult Perspectives Class* is a seven Sunday DVD/discussion series titled *Invitation to a Journey* where we will interact with seven acclaimed scholars, theologians, and authors, in exploring what is next for Christianity and what faith may look like for ourselves and others in this 21<sup>st</sup> century. Join us in the Geneva Room at 9:30 am.



### **A CRAZY, HOLY GRACE- THE HEALING POWER OF PAIN AND MEMORY BY FREDRICK BUECHNER**



When pain is real, why is God silent? Frederick Buechner has grappled with the nature of pain, grief, and grace ever since his father committed suicide when Buechner was a young boy. In this essential collection of essays, including one never before published, Frederick Buechner finds that the God who might seem so silent is ever near. Join the study and conversation in CE 207. You can pick up your copy of the book and study guide for \$10.00.

### **CALLING ALL YOUTH TO SUNDAY SCHOOL!!! 10:30 - 10:55 AM**

Youth grades 6<sup>th</sup>-12<sup>th</sup>, please join us for Sunday School following the 9:15 am Heart of Worship Service, 10:30-10:55 am. We will enjoy fellowship, breakfast, and dive deeper into the scriptures discussed in the today's worship services. Meet us in the back of McLeod Hall! Come hungry and ready to learn more about God!



First Presbyterian Church  
637 6th Street, NW  
Winter Haven, FL 33881  
863-294-3121  
FAX 863-294-1105  
www.firstpreswh.org  
office@firstpreswh.org

### Our Purpose Statement

As a congregation of the Presbyterian Church (USA), First Presbyterian Church of Winter Haven exists to show God's kingdom to the world as we...

*Share the good news of what God has done in Jesus Christ*

*Develop and nurture God's children into disciples*

*Provide a place and a program for praising God*

*Live our lives according to the Word, guided by the Spirit*

*Commit to justice for all God's people.*

Adopted by Session, 2003

**This newsletter is published weekly.**

Summer months and holidays published bi-weekly.

Church dated material, please deliver by 11/15/19.

Non-profit Org.  
U.S. Postage Paid  
Permit No. 1162  
Lakeland, FL

#### Bag Lunch Ministry

We gave out 172 bag lunches  
the week of 11/4/19.

#### Soup Kitchen Ministry

We fed 100 people on 11/9/19.

**Return Service Requested**

# SATURDAY NITE LIVE

**Entertainment and educational activities for physically and mentally challenged late teens through adults.**



*In **A Charlie Brown Thanksgiving** does Chef Snoopy prepare and serve a traditional meal?*

*For our snack at Saturday Nite Live will you get to taste "Turkey in the Straw"?*

*For the answers to these questions, come to Saturday Nite Live on **November 16** as we prepare to celebrate the holiday early with crafts and games too at **7 pm** in McLeod Hall.*

**If you know of someone who would benefit from attending this program, please contact Dr. Harvey at 294-3121.**