



FIRST PRESBYTERIAN CHURCH WINTER HAVEN

Tower Chimes

Weeks of January 12, 2020

Issue 741

134 Years of Ministry

Dr. Steven R. Negley
Senior Pastor

Dr. C. Alan Harvey
Associate Pastor

Rev. Sarah A. Bishop
Associate Pastor for
Christian Education and
Family Ministries

Lynn M. McCoy
Director of
Music Ministries

Emily G. Snyder
Director of
Student Ministries

Robin D. Miller
Director of Finance &
Administration

Connie J. Shipley
Administrative Assistant

Rose S. Flynn
Office Assistant

Sammy D. Bryant
Director of Maintenance

Tonia L. Milbry
Custodian

ADULT SUNDAY SCHOOL ~ NEW CLASSES STARTING THIS SUNDAY, JANUARY 12!

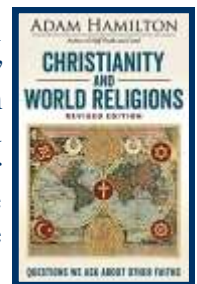
Perspectives



The Adult Perspectives Class will start a seven Sunday DVD/discussion series on **January 12** titled *Honoring Creation* where we will interact with seven acclaimed scholars, theologians and authors exploring what is next for Christianity. We will ponder what our response to God's creation might look like for ourselves and others in the 21st century. The focus of this session is: *Restoring Our Relationship With the Divine*. This class meets at **9:30 am** in the Geneva Room.

Voyagers

Exploring four major world religions with videos and respectful conversation, join an Adult Sunday School as they study: *Christianity and World Religions: Questions We Ask About Other Faiths*. With interviews with religious leaders from Hinduism, Buddhism, Islam, and Judaism, we will compare beliefs and build bridges with these four world religions. Beginning with understanding, we can all seek peace in our world, love our neighbors, and find positive ways to share the gospel. Meeting in CE 207 starting **January 12 at 9:30 am**.



FUNTIMERS AND FRIENDS

Our next gathering will be on **Tuesday, January 14**. We will travel to the **Circle B Bar Reserve** on Winter Lake Road for a tour by open tram OR you may choose to walk the paths and visit the Exhibit Hall instead. We'll have chilly weather so we suggest you dress warmly and bring a small blanket for the tram ride. We will provide bottled water and after the Reserve tour, we will travel to a local restaurant for lunch.

The Reserve tour will begin at 10 am. **We will be leaving the church by 9:15 am.**

To sign-up, call the church office at 294-3121, email to office@firstpreswh.org, sign-up at the FunTimers display in McLeod Hall, or fill out this tear-off and drop it in the offering plate or by the office.

Name: _____ # Attending: _____

Phone number: _____

I/We will travel to the Reserve by: [] bus OR [] car.

At the Reserve: I/we will ride the tram [] OR I/we will walk the Reserve trails [].



OPPORTUNITIES THIS WEEK

Sunday, January 12

- 8:00 am Chapel Worship
- 9:15 am Connection (MH)
- 9:15 am Heart of Worship (Sanctuary)
- 9:30 am Sunday School-Children/Adults (CE)
- 10:30 am Sunday School-Youth (MH)
- 11:00 am Worship (Sanctuary)
- 5:00 pm High School Youth Group (GC)

Monday, January 13

- 8:45 am MOM (CE)
- 10:00 am Lydia Circle (MH)
- 6:00 pm Financial Peace (ER)
- 6:30 pm Christian Education (GR)

Tuesday, January 14

- 9:00 am Staff Meeting (MCR)
- 12:00 pm Men's Lunch (MH)
- 6:00 pm Personnel (MCR)

Wednesday, January 15

- 8:45 am MOM (CE)
- 1:30 pm Congregational Care (MH)
- 2:30 pm Memorial Garden (MCR)
- 3:00 pm Christ Kids (CE)
- 5:30 pm Middle School Youth Group (GC)
- 6:00 pm Chancel Bells (MS)
- 7:00 pm Choir (MS)

Thursday, January 16

- 12:00 pm Chapel Bells (MS)
- 3:00 pm Odd Month Third Thursday at 3
Book Discussion Club (MH)

Friday, January 17

- 8:45 am MOM (CE)
- 5:00 pm Praise Band (Sanctuary)

Saturday, January 18

- 2:00 pm Soup Kitchen Prep (Kitchen)
- 4:00 pm Soup Kitchen (737)
- 7:00 pm Saturday Nite Live (MH)

Remember in Prayer

MEMBERS

Melvin & Debbie Anderson	Kay Hedden	Barbara Roberts
Kathy Andrews	Doris Hill	Zane Schwenk
Orin & Helen Champlain	Bryan Howard	George Seagreaves
Carl Cheatham	Isobel Hubbard	Cash Sheaffer
Charlie Darte	Jim Huff	Bob Sheffield
Marjorie DiLorenzo	Martha Johnson	Joyce Shirah
Yolanda Dyer	Bill Johnston	Barbara H. Smith
Jana Easterling	John Kissel	Joel Smith
Dana Elmore	Dena Lancashire	Christine Stevens
Bill Everhart	Eric Lindstrom	Pam Tallent-Blackburn
John Gray	Spike Lucia	Carolyn Thompson
Jane Hayman	Pat McCarty	Mike Vibral
Joyce Hayman	Bob McClew	Gwen Waters
Frances Heath	Edna Mitchell	Sug Zowarka
	Nancy Neale	
	Jackie Pinckney	

Relatives & Friends

Bruce Bachman	Jim & Ellie Threlkel's friend
Tiffany Chen	George Butz's friend
Larry Durrence	George & Joyce Carefoot's brother-in-law
Al Ellis' family	Jim Threlkel's friend
Kate Hurd & family	Cathy Cheatham's friends
Tom Francis	Jim Francis' brother
Verona Johnson	Lynn Oakley's friend
John Kluberg	Nancy Dobler's brother
Bill Lanoue	George Butz's friend
Bob Lapsley	Susan Singleton's friend
Carol Moore	Roger & Marie Able's friend
Sal Moraco	Tom & Jeri Oldt's friend
Catherine Mueller	Jay & Lia Gray's niece
Michael Oriani	Joe Oriani's brother
Penni Tinsley	Tom & Jeri Oldt's friend
Margarita Villarreal	Lynn Oakley's friend
Ennis & Liz Young	Anne Meadows' friend

MILITARY



Zach Anaya	Sean Harp
Brenden Anderson	David Knowles
Christian Anderson	John Marotti
Samuel Crockett	Mathew Massam
Zach Drum	KaitLin Marotti
Robert Ferguson	Ashton Pitts
Stephanie Gillie	Shad Skinner
Eddie Gray	Drew Stapor
Daniel Harp	

A GREAT WAY YOU CAN HELP A HURTING FRIEND

Do you have a friend, neighbor, coworker, or relative who has suffered a loss or is going through a difficult time? Here's a great way you can help them--tell them about our Stephen Ministry! Stephen Ministers are members of First Presbyterian Church who have received special training to provide high quality, confidential, one-to-one, Christian care to hurting people. Stephen Ministers meet weekly with their care receivers to listen, care, encourage, and provide emotional and spiritual support. (Males are matched with males, and females are matched with females.) The caring relationship lasts for as long as the person needs care. It's free, and it's a powerful way you can help a hurting friend.

Stephen Minister Request Form Boxes are placed in the **Centennial Room, narthex, and balcony hallway** for your convenience. These secure boxes make it easy for someone to make a Confidential Request for a Stephen Minister. Forms are found in the pew pockets and forms and pens are also held by the box making it convenient for individuals to request a Stephen Minister.

To find out more about Stephen Ministry for you or someone you know, **call Susan Singleton at 318-9208. Or you can talk with one of our other Stephen Leaders: Alan Harvey, Mary Marrs, Steve Negley, Barbara Perkins, or Jean Strang.**



YOUTH FELLOWSHIP GATHERINGS RETURN JANUARY 12



Middle School Youth meets on **Wednesday evenings, from 5:30 – 7:30 pm** in the Golden Student Center. Join our leaders and our sixth, seventh, and eighth grade students as we enjoy time of food (we always have a meal), fun, and faith. Feel free to invite your friends to come along, too.

High School Youth, our ninth, tenth, eleventh, and twelfth grade young people along with leaders gather at the Golden Student Center (711 Sixth Street, NW) on **Sunday evenings (5:30 – 7:30 pm)** to share food, Christian fellowship, and service. Come check us out and watch your walk with Jesus deepen.



PRESBYTERIAN WOMEN BIBLE STUDY

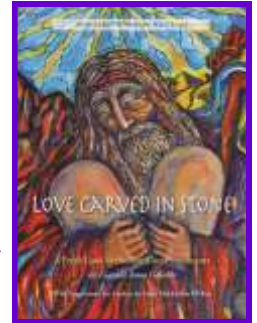
The Lydia and Joy circles current Bible Study is:

“Love Carved in Stone” – A Fresh Look at the Ten Commandments.

The Lydia Circle meets on the **2nd Monday** of each month and will meet on **January 13 at 10 am** in the back of McLeod Hall.

The Joy Circle meets on the **3rd Tuesday** of each month and will meet on **January 21 at 9:30 am** at the home of Carol Carter.

The study books are available at a cost of \$10. See either Sue McClew or Carol Carter, or come by the church office to purchase your copy. Our group is open to any and all women of the church interested in fellowship and Bible study.



DAVE RAMSEY'S FINANCIAL PEACE UNIVERSITY NEW CLASS STARTS THIS MONDAY, JANUARY 13

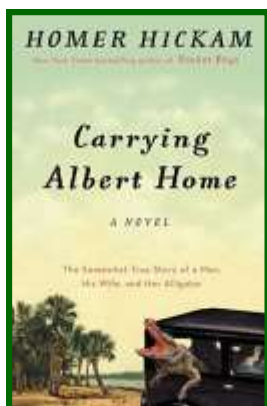
Take control of your money with *Financial Peace University* (FPU)! This nine-lesson course uses biblical wisdom and common sense to help you tackle budgeting, pay off debt, and make your money work for you! FPU includes your member workbook and a year of free online resources through Financial Peace Membership. You can register now at fpu.com/1106335/.



SEWING FOR HONDURAS

Sewing for Honduras ladies have met and are busy sewing dresses and backpacks. They meet once a month on a day convenient for most. Next sewing day is **Wednesday, January 15, 10 am**.

In the meantime, if you are curious or slightly interested and would like to see the patterns, materials, have a suggestion, or want to get started, please contact Sharon Mitchell 419-332-5268.



ARE YOU READING FOR OUR NEXT ODD MONTH THIRD THURSDAY AT 3 BOOK CLUB?

*Carrying Albert Home: The Somewhat True Story
of A Man, His Wife, and Her Alligator*
By Homer Hickam.

Please join us **Thursday, January 16 at 3 pm** in the back of McLeod Hall for discussion and light refreshments.

Announcing the Theme of the 2020 Advent Devotional: Christmastide Travels and Tales



Reading the stories of evangelists Matthew and Luke about Jesus' birth, we learn that there were trips taken: from Nazareth to Bethlehem, from Bethlehem to Egypt, and from Egypt to Nazareth. Holiday decorations, special events and programs often lure us to travel. We would like you to share a tale of a holiday destination, of travel just prior to Thanksgiving to Epiphany (January 6). Examples: visiting Christmas Markets in Austria or Germany, going to NYC to see the Rockettes, attending a special concert by the Mormon Tabernacle Choir or St. Olaf's, touring a home or estate elaborately decorated or watching young Greek men dive for a cross at Tarpon Springs.

We invite you to share your Christmastide Travels and Tales with us. As in the past, to your stories we will add scripture readings and prayers to complete each day's devotional reading. We believe this will be a most enjoyable devotional and we hope you will write a paragraph or as much as a page about your travels and tales at Christmastide. We will need at least 26 submissions. Please take a few moments and write these reflections down while "in the Christmas mood." Submit them to cshipley@firstpreswh.org or aharvey@firstpreswh.org and we will take them from there. We would also love it if you included a photo.



CHRIST KIDS

Christ Kids – our faith-filled and safe after-school program for children 4 years through 5th grade meets **Wednesdays at 3 pm**. Permission slips for families are on the church website, so spread the word and don't forget to join us as an Adult Volunteer! Questions? Contact Rev. Sarah via calling the church office at 294-3121 or emailing sbishop@firstpreswh.org.



SOUND BOARD OPERATORS WANTED



If technology is your thing, we have a place for you in our musical praise!! We are in need of people who would like to learn about our sound system and help during the worship services to make sure all our praise is heard! We will be holding a training session, so **contact Lynn at 701-570-1485** and let her know if you are willing to join the Sunday rotation in the sound booth. **PLEASE!!**

THE 2020 SANCTUARY FLOWER CALENDAR IS UP IN THE NARTHEX

If your desired date is not available, there is space to sign up for placing flowers in the narthex.

Please remember these important points:

- * Include your best contact number.
- * Include the name of your florist.
- * Tell your florist that the arrangement *must* be here by **Friday, 12 pm**.
- * Call the church office the week before to give bulletin information at 294-3121.



JOIN US ON SUNDAYS!!!



8:00 am Chapel Worship

A traditional worship service held in our chapel. The service follows the same order as the 11:00 am worship, but does not have a Chancel Choir. Musical ensembles will offer special music on many Sundays. *A Time with Younger Disciples* will be included when we have children in attendance.

9:15 am Heart of Worship

A Praise and Worship service held in our sanctuary. Along with scripture, sermon, and prayers, a praise band will help the congregation in adoring and showing reverence to God. Following the *Time with Younger Disciples*, children will be invited to join Ms. Lynn in music and then to join in their own Children's Sunday School Classes.



11:00 am Sanctuary Worship

A traditional worship service held in our sanctuary. The service follows the same order as the 8:00 am Chapel Service, and includes music from the Chancel Choir and the organ, as well as other instruments and groups.



DON'T MISS THE CONNECTION 9:15-10:45 AM

This fellowship time in McLeod Hall offers a coffee bar type selection with different flavored creamers, pastries, etc. It is a gathering place before or between worship and Sunday School for some folks.



SUNDAY SCHOOL FOR ALL AGES CHILDREN & ADULTS: 9:30 - 10:30 AM

FOR THE CHILDREN



SPARK Sunday School will begin for our children (PreK-5th grade) and will be sparking faith after the *Time With Younger Disciples* in the Heart of Worship service. PreK-K will be meeting in Room 101 and 1st through 5th grades in Room 206. Don't forget they will also be doing music with Ms. Lynn before their respective classes and ART on the third Sunday. Sunday School ends at 10:30 am.

Can't make it to church? Your family can activate faith with God's Word by connecting with the stories at home with our Spark home sheets and buying a copy of the Story Bible at www.weareSparkhouse.org.

ADULT SUNDAY SCHOOL

PERSPECTIVES SUNDAY SCHOOL MEETS IN THE GENEVA ROOM

PLEASE SEE THE FRONT COVER FOR INFORMATION ON NEW CLASS.

VOYAGERS

PLEASE SEE THE FRONT COVER FOR INFORMATION ON NEW CLASS.

CALLING ALL YOUTH TO SUNDAY SCHOOL!!!

10:30 - 10:55 AM

Youth grades 6th-12th, please join us for Sunday School following the 9:15 am Heart of Worship Service, **10:30-10:55 am**. We will enjoy fellowship, breakfast, and dive deeper into the scriptures discussed in the today's worship services. Meet us in the back of McLeod Hall! Come hungry and ready to learn more about God!





First Presbyterian Church
 637 6th Street, NW
 Winter Haven, FL 33881
 863-294-3121
 FAX 863-294-1105
 www.firstpreswh.org
 office@firstpreswh.org

Our Purpose Statement

As a congregation of the Presbyterian Church (USA), First Presbyterian Church of Winter Haven exists to show God's kingdom to the world as we...

Share the good news of what God has done in Jesus Christ

Develop and nurture God's children into disciples

Provide a place and a program for praising God

Live our lives according to the Word, guided by the Spirit

Commit to justice for all God's people.

Adopted by Session, 2003

This newsletter is published weekly.

Summer months and holidays published bi-weekly.
 Church dated material, please deliver by 1/10/20.

Non-profit Org.
 U.S. Postage Paid
 Permit No. 1162
 Lakeland, FL

<p>Bag Lunch Ministry We gave out 209 bag lunches the week of 12/30/19. We gave out 728 bag lunches in December, 2019.</p>
<p>Soup Kitchen Ministry We fed 120 people on 1/4/20. We fed 345 in December, 2019.</p>

Return Service Requested

OUR TALENT SHOW IS JUST AROUND THE CORNER

Here is some helpful information. It will be held **Sunday, February 9**. Spaghetti dinner will be **5:00 p.m.** with show starting at **5:30 p.m.**

Our annual talent show involves acts by the entire congregation. The talent show is also used as a fundraiser for the youth program. The contributions you make by donating goes towards ensuring our students are able to attend retreats, different music events, and having meals at youth group among other things.

This helps to build friendships and connections with each other but also contributes to spiritual growth. So even if you don't plan on performing at the talent show, we hope you will support us just by attending.

If you have a special talent to share and would like to participate, please contact Emily Snyder at esnyder@firstpreswh.org or the church off at 294-3121.

