



FIRST PRESBYTERIAN CHURCH WINTER HAVEN

Tower Chimes

Week of December 8, 2019

Issue 737

133 Years of Ministry

SECOND SUNDAY OF ADVENT

We hope you will join us for worship during the Advent season as we are *Seekers of the Light*. On the four Sundays leading up to Christmas, the sermon and scripture will be joined with special music by our choirs and praise band.

On **December 8**, the **Second Sunday of Advent**, we will remember how *The Angels Shout the News*.

The anthem theme for the **Third Sunday of Advent, December 15**, will focus on the *Seekers of the Light Hurry to Bethlehem*.

On **December 22**, the **Fourth Sunday of Advent**, we will *Behold! Go Tell! Shine!*

Let us prepare our hearts this Advent to celebrate the birth of the Holy Child of Bethlehem.

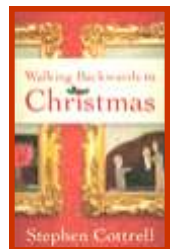


ADVENT: ADULT SUNDAY SCHOOL

Walking Backwards to Christmas

Beginning December 8 at 9:30 am in CE Room 207

In our second Adult Sunday School, we'll be reading the book, *Walking Backwards to Christmas*, which starts at the end, with Jesus' presentation to Anna and Simeon at the temple and moves backwards through the Christmas stories both light and dark. Telling the story through the eyes of both the famous and imagined characters, the author and our discussion leaders will invite the class to experience Jesus' birth anew.



Join the conversation by purchasing the book, \$10, from the church office or in class.



SAVE THE DATE FOR JINGLE JAVA JAM!

This year's programming has brought a return of the Jingle Java Jam which will be on **Sunday, December 8 at 4:00 pm** Please come and enjoy an afternoon of festive Christmas music including beautiful new arrangements of favorite carols and lively popular tunes. You will hear ensembles and solos from tubas to bells and jazz to ballades.

Dessert, coffee, and hot chocolate will be served and the program is free of charge so please bring your family and friends to help celebrate the season through song!



Dr. Steven R. Negley
Senior Pastor

Dr. C. Alan Harvey
Associate Pastor

Rev. Sarah A. Bishop
Associate Pastor for
Christian Education and
Family Ministries

Lynn M. McCoy
Director of
Music Ministries

Emily G. Snyder
Director of
Student Ministries

Robin D. Miller
Director of Finance &
Administration

Connie J. Shipley
Administrative Assistant

Rose S. Flynn
Office Assistant

Sammy D. Bryant
Director of Maintenance

Tonia L. Milbry
Custodian

Remember in Prayer

OPPORTUNITIES THIS WEEK

Sunday, December 8 SECOND SUNDAY OF ADVENT

- 8:00 am Chapel Worship
- 9:15 am Connection (MH)
- 9:15 am Heart of Worship (Sanctuary)
- 9:30 am Sunday School-Children/Adults (CE)
- 10:30 am Sunday School-Youth (MH)
- 11:00 am Worship (Sanctuary)
- 2:00 pm FunTimers-Christmas Concert (MH/Bartow)
- 4:00 pm Jingle Java Jam (MH)
- 5:00 pm High School Youth Group (GC)

Monday, December 9

- 8:45 am MOM (CE)
- 10:00 am Lydia Circle (MH)
- 6:30 pm Christian Education (GR)

Tuesday, December 10

- 9:00 am Staff Meeting (MCR)
- 12:00 pm Men's Lunch (MH)
- 6:00 pm Personnel (MCR)

Wednesday, December 11

- 8:45 am MOM (CE)
- 12:00 pm Buildings & Grounds (MH)
- 3:00 pm Christ Kids (CE)
- 5:30 pm Middle School Youth Group (GC)
- 6:00 pm Chancel Bells (MS)
- 7:00 pm Choir (MS)

Thursday, December 12

- 12:00 pm Chapel Bells (MS)

Friday, December 13

- 8:45 am MOM (CE)
- 5:00 pm Praise Band (Sanctuary)

Saturday, December 14

- 2:00 pm Soup Kitchen Prep (Kitchen)
- 4:00 pm Soup Kitchen (737)
- 6:30 pm Come to the Stable (PL)
- 7:30 pm Come to the Stable (PL)

MEMBERS

Marie Able	Joyce Hayman	Nancy Neale
Melvin & Debbie Anderson	Frances Heath	Bill Patchen
Kathy Andrews	Kay Hedden	Jackie Pinckney
Orin & Helen Champlain	Doris Hill	Barbara Roberts
Carl Cheatham	Bryan Howard	George Seagreaves
Charlie Darte	Isobel Hubbard	Cash Sheaffer
Marjorie DiLorenzo	Jim Huff	Bob Sheffield
Yolanda Dyer	Martha Johnson	Joyce Shirah
Jana Easterling	Bill Johnston	Barbara H. Smith
Dana Elmore	John Kissel	Joel Smith
Bill Everhart	Dena Lancashire	Christine Stevens
John Gray	Eric Lindstrom	Pam Tallent-Blackburn
Pam Gray	Spike Lucia	Carolyn Thompson
Jane Hayman	Pat McCarty	Mike Vibrat
	Bob McClew	Gwen Waters
	Edna Mitchell	Sug Zowarka

IN THE HOSPITAL: Helen Butz

Relatives & Friends

Michael Branch	Jeff Bowen's friend
Tiffany Chen	George Butz's friend
Larry Durrence	George & Joyce Carefoot's brother-in-law
Al Ellis	Jim Threlkel's friend
Kate Hurd & family	Cathy Cheatham's friends
Tom Francis	Jim Francis' brother
Verona Johnson	Lynn Oakley's friend
John Kluberg	Nancy Dobler's brother
Bill Lanoue	George Butz's friend
Bob Lapsley	Susan Singleton's friend
Sal Moraco	Tom & Jeri Oldt's friend
Michael Oriani	Joe Oriani's brother
Sandy Schwenk	Zane Schwenk's mother
Penni Tinsley	Tom & Jeri Oldt's friend
Margarita Villarreal	Lynn Oakley's friend
Ennis & Liz Young	Anne Meadows' friend



Zach Anaya
Brenden Anderson
Christian Anderson
Samuel Crockett
Zach Drum
Robert Ferguson
Stephanie Gillie
Eddie Gray
Daniel Harp

MILITARY

Sean Harp
David Knowles
John Marotti
Mathew Massam
KaitLin Marotti-Pitts
Ashton Pitts
Shad Skinner
Drew Stapor



WEEKLY YOUTH FELLOWSHIP MEETINGS

Middle School Youth is meeting on **Wednesday evenings, from 5:30 – 7:30 pm** in the Golden Student Center. Join with **Philip Batista, Bill Lockhart, Steve Negley, and Emily Snyder (our Director of Student Ministries)** and our sixth, seventh, and eighth grade students as we enjoy time of food (we always have a meal), fun, and faith. Feel free to invite your friends to come along, too.

High School Youth (our ninth, tenth, eleventh, and twelfth grade young people along with **Cheryce Harris, Steve Negley, Jonathan Owen, Emily Snyder, and Peggy Threlkel**) gathers at the Golden Student Center (711 Sixth Street, NW) on **Sunday evenings (5:30 – 7:30 pm)** to share food, Christian fellowship, and service. Come check us out and watch your walk with Jesus deepen.

IT IS THAT TIME ~ POINSETTIA ORDER FOR 2019

Poinsettias are a yearly tradition to decorate the church on Christmas, “in honor of” or “in memory of” a loved one or friend. This year the poinsettias will be in the sanctuary on Sunday, December 22. Please fill out the order form below. The cost per plant is \$10 and checks, marked “poinsettia fund”, should be made payable to First Presbyterian Church. Place the order form and check in the offering plate, mail it, or take it to the church office by Monday, December 16.

A complete listing will be available Sunday, December 22.

IMPORTANT ~ PLEASE PRINT LEGIBLY

Donor(s): _____

In Memory of: _____

In Honor of: _____

_____ I will pick up my poinsettia after the 9 p.m. Christmas Eve service.

_____ I would like my poinsettia delivered to a shut-in.

Number of plants ordered: _____ Amount Enclosed: \$ _____



PLEASE SIGN UP NOW FOR *COME TO THE STABLE*



It's only a week away and we need shepherds, angels, and kings for the **6:30 pm children's performance** and the **7:30 pm middle/high schooler's performance** on **Saturday, December 14.**

Elementary school children can sign-up for the 6:30 performance on the board in the church Narthex OR at Christ Kids on Wednesdays.

Middle and High schoolers can sign-up for the 7:30 performance on the board in the church Narthex OR at the Youth Group meetings.

Questions? Call Nancy Shaw at 258-9232.



PRESBYTERIAN WOMEN BIBLE STUDY

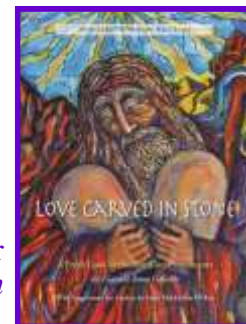
The Lydia and Joy circles current Bible Study is:

“Love Carved in Stone” – A Fresh Look at the Ten Commandments.

On **December 9**, the *Lydia Circle* will begin at **10:30 a.m.** (note time change) in the back of McLeod Hall with Lesson #4, followed by a Potluck Christmas luncheon.

The Joy Circle meets on the **3rd Tuesday** of each month and will meet on **December 17 at 9:30 am** at the home of Carol Carter.

The study books are available at a cost of \$10. See either Sue McClew or Carol Carter, or come by the church office to purchase your copy. Our group is open to any and all women of the church interested in fellowship and Bible study.



CHRISTMAS SEASON SOUP KITCHEN



We need help cooking hams, turkeys, and green bean casserole to help celebrate the Christmas season with our friends and neighbors at our **SATURDAY SOUP KITCHEN**. For each of the past two years, our Christmas Day Soup Kitchen has hosted under twenty guests (as other groups in the community groups have held Christmas day feedings), while our soup kitchens on the Saturdays following Christmas have fed well over 100 people. This year, we will **not** be feeding on Christmas Day, but invite your help to have a spectacular Saturday Soup Kitchen meal (Ham, turkey, mashed potatoes, green beans, gravy, corn, and desserts) on **Saturday**,

December 28. Please sign up in McLeod Hall if you can cook a ham, turkey, or green bean casserole and bring it to the church on the Saturday after Christmas.



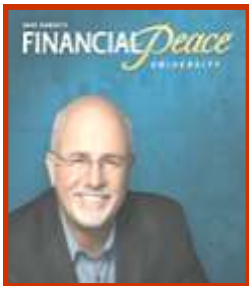
SEWING FOR HONDURAS

Sewing for Honduras ladies have met and are busy sewing dresses and backpacks. They meet once a month on a day convenient for most. Next sewing day is **Wednesday, December 11, 10 am**.

In the meantime, if you are curious or slightly interested and would like to see the patterns, materials, have a suggestion, or want to get started, please contact Sharon Mitchell 419-332-5268.



DAVE RAMSEY'S FINANCIAL PEACE UNIVERSITY NEW CLASS STARTING JANUARY 13, 2020



Take control of your money with *Financial Peace University* (FPU)! This nine-lesson course uses biblical wisdom and common sense to help you tackle budgeting, pay off debt, and make your money work for you! FPU includes your member workbook and a year of free online resources through Financial Peace Membership. Please contact Lee and Pam Wilkerson at 863-221-2006 or wilkeglk@verizon.net for more information. Registration will be opening soon.



2020 BREAD PICK UP LIST IS COMING SOON!

We are in the process of creating our 2020 Saturday bread pick-up list from Publix. If you are currently on the list and can no longer participate, or if you did not pick up bread in 2019 and would like to, please call Alan at 294-3121 to let him know.



ANGELS CARE CENTER OF ELOISE Angel Collection Box Needs

There is an ongoing need for the following items to give out at the Angels Care Center. Please leave items in the Angel Collection Box in McLeod Hall. Thank YOU, and God Bless!!!

First Aid Kits: washcloths, band-aids, wet wipes, small soaps, small antibacterial soap, Q-tips, small packets of antibiotic ointment, etc.



Children's "Jesus Kits": coloring sheets with Biblical themes, crayons, scripture/song cards (simple and short for children), small books, stickers, etc.

Toiletry Kits: shampoo, soap, deodorant, razors, feminine products, combs, washcloths, hand gel, lotion, toothbrush and toothpaste, small samples from hotel/motels, etc.

Miscellaneous: zip lock bags (gallon, quart and snack size).

JOIN US ON SUNDAYS!!!

8:00 am Chapel Worship

A traditional worship service held in our chapel. The service follows the same order as the 11:00 am worship, but does not have a Chancel Choir. Musical ensembles will offer special music on many Sundays. *A Time with Younger Disciples* will be included when we have children in attendance.



9:15 am Heart of Worship

A Praise and Worship service held in our sanctuary. Along with scripture, sermon, and prayers, a praise band will help the congregation in adoring and showing reverence to God. Following the *Time with Younger Disciples*, children will be invited to join Ms. Lynn in music and then to join in their own Children's Sunday School Classes.



11:00 am Sanctuary Worship

A traditional worship service held in our sanctuary. The service follows the same order as the 8:00 am Chapel Service, and includes music from the Chancel Choir and the organ, as well as other instruments and groups.



DON'T MISS THE CONNECTION 9:15-10:45 AM

This fellowship time in McLeod Hall offers a coffee bar type selection with different flavored creamers, pastries, etc. It is a gathering place before or between worship and Sunday School for some folks.



SUNDAY SCHOOL FOR ALL AGES CHILDREN & ADULTS: 9:30 - 10:30 AM

FOR THE CHILDREN

SPARK Sunday School will begin for our children (PreK-5th grade) and will be sparking faith after the *Time With Younger Disciples* in the Heart of Worship service. PreK-K will be meeting in Room 101 and 1st through 5th grades in Room 206. Don't forget they will also be doing music with Ms. Lynn before their respective classes and ART on the third Sunday. Sunday School ends at 10:30 am.



Can't make it to church? Your family can activate faith with God's Word by connecting with the stories at home with our Spark home sheets and buying a copy of the Story Bible at www.weareSparkhouse.org.

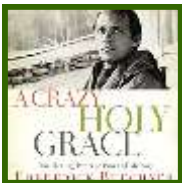
ADULT SUNDAY SCHOOL

PERSPECTIVES SUNDAY SCHOOL MEETS IN THE GENEVA ROOM

The *Adult Perspectives Class* is a seven Sunday DVD/discussion series titled *Invitation to a Journey* where we will interact with seven acclaimed scholars, theologians, and authors, in exploring what is next for Christianity and what faith may look like for ourselves and others in this 21st century. Join us in the Geneva Room at **9:30 am**.



A CRAZY, HOLY GRACE- THE HEALING POWER OF PAIN AND MEMORY BY FREDRICK BUECHNER



When pain is real, why is God silent? Frederick Buechner has grappled with the nature of pain, grief, and grace ever since his father committed suicide when Buechner was a young boy. In this essential collection of essays, including one never before published, Frederick Buechner finds that the God who might seem so silent is ever near. Join the study and conversation in CE 207. You can pick up your copy of the book and study guide for \$10.00.

CALLING ALL YOUTH TO SUNDAY SCHOOL!!! 10:30 - 10:55 AM

Youth grades 6th-12th, please join us for Sunday School following the 9:15 am Heart of Worship Service, **10:30-10:55 am**. We will enjoy fellowship, breakfast, and dive deeper into the scriptures discussed in the today's worship services. Meet us in the back of McLeod Hall! Come hungry and ready to learn more about God!



First Presbyterian Church
637 6th Street, NW
Winter Haven, FL 33881
863-294-3121
FAX 863-294-1105
www.firstpreswh.org
office@firstpreswh.org

Our Purpose Statement

As a congregation of the Presbyterian Church (USA), First Presbyterian Church of Winter Haven exists to show God's kingdom to the world as we...

Share the good news of what God has done in Jesus Christ

Develop and nurture God's children into disciples

Provide a place and a program for praising God

Live our lives according to the Word, guided by the Spirit

Commit to justice for all God's people.

Adopted by Session, 2003

This newsletter is published weekly.

Summer months and holidays published bi-weekly.

Church dated material, please deliver by 12/6/19.

Non-profit Org.

U.S. Postage Paid

Permit No. 1162

Lakeland, FL

Bag Lunch Ministry

We gave out 1409 bag lunches
the week of 11/25/19.

We gave out 761 bag lunches
in November, 2019.

Return Service Requested

Soup Kitchen Ministry

We fed 85 people on 11/30/19.

We fed 408 in November, 2019.



CHURCH PICTORIAL DIRECTORY

We are excited to announce that we have requested the services of **Lifetouch Church Directories** to prepare our Pictorial Family Album. It will contain color portraits of all the families and updated addresses and contact information.

Photography session dates will be **December 27 & 28** (Friday & Saturday) then **February 4-8** (Tuesday - Saturday.)

DECEMBER PHOTOGRAPHY SESSION SIGN UP BEGINS AFTER WORSHIP, SUNDAY, DECEMBER 1 IN THE NARTHEX

Families with family members home for the holidays are encouraged to sign up for the December dates.

Session times are: **Friday, December 27, 1 - 8 pm**, and **Saturday, December 28, 10 am - 5 pm**.

Beginning **Wednesday, December 4**, you will be able to sign up on our web-site at **firstpreswh.org** and our Facebook page at **First Presbyterian Church of Winter Haven, FL**.

We will open our February 4-8 sessions sign-ups at a later date.



FUNTIMERS NEXT OUTING

Sunday, December 8 at 2 pm

Bartow Adult Band Christmas Concert

We will gather in McLeod Hall after the 11 am service for a sandwich lunch and fellowship and leave after lunch to go to the concert in the Bartow Civic Center, 2250 S. Floral Ave., Bartow.

We'll take the church bus, or you may choose to drive yourself. The lunch and concert are FREE!



To sign-up, please email to office@firstpreswh.org or call the church office at 294-3121.